

# Presentation of Plaine Commune and its projects

05-09/2014

# Plaine Commune, a strategic territory in Ile de France



# Plaine Commune : values and political strategy

---

- ❑ Fair development
- ❑ Inclusive development
- ❑ Development that preserves identities
- ❑ Development and enhancement of rural and working-class areas
- ❑ Polycentric development

# Point of history

---

- **1985** : Creation of the mixt federation of the "Plaine-Renaissance" (Aubervilliers, Saint-Denis, Saint-Ouen and the Departmental Council).
- **1990** : Adoption of development charter  
Publication of a White Paper on the Isle of France.  
La Plaine-Saint-Denis is described as a strategic development pole.
- **1991** : Creation of SEM "Plain and Development" in which the state participate.
- **1992** : Validation of the urban project
- **1993** : Decision of the establishment the "Stade de France" associated with the cover of the motorway A1 and the opening of the RER B and D stations.
- **1994** : The SDRIF identify the Plaine Saint-Denis as " a hub of redevelopment."  
This area is classified "priority area" by CPER 1994-1998 and 2000-2006.

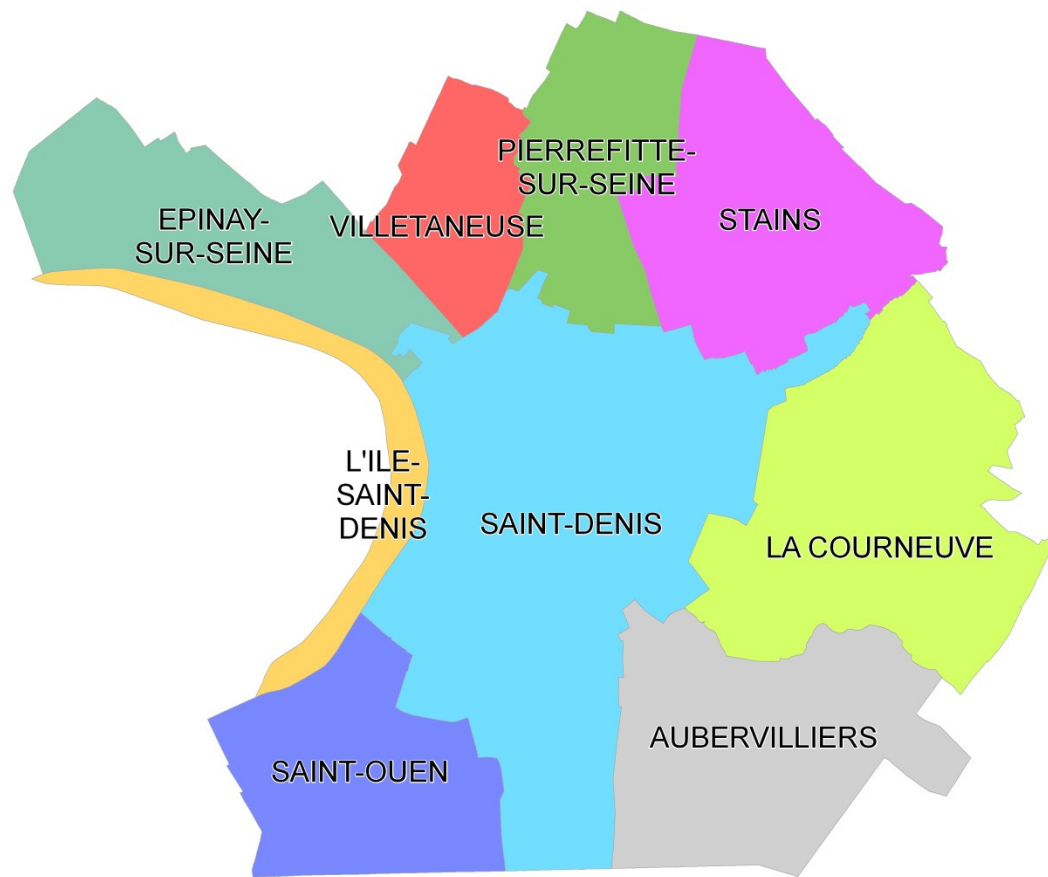
# Point of history

---

- ❑ **1999** :Adoption Charter intermunicipal planning and development of La Plaine Saint-Denis  
Expanded with 10 cities: Aubervilliers, Epinay, La Courneuve, Ile-Saint-Denis, Pierrefitte, Saint-Denis, Saint-Ouen, Stains, and Villetaneuse Pantin
- ❑ **2000** :Creation of the urban community of Plaine Commune.
- ❑ **2002** :Creation of the Public Establishment of Planning Plaine de France.

# 9 cities

---



# Plaine Commune in numbers

---

- ❑ 9 cities
- ❑ 4900 hectares
- ❑ 408 000 residents
- ❑ 18 500 companies
- ❑ 200000 jobs ... but also
  - ❑ 29 369 jobseekers
  - ❑ 158 448 main homes, including :
  - ❑ 67 700 social housing

# The community project

---

- ▣ A balanced and sustainable development of the territory
- ▣ Economic development as a source of solidarity project area
- ▣ Economic development for employment and social development
- ▣ Quality housing for all



# The objectives

---

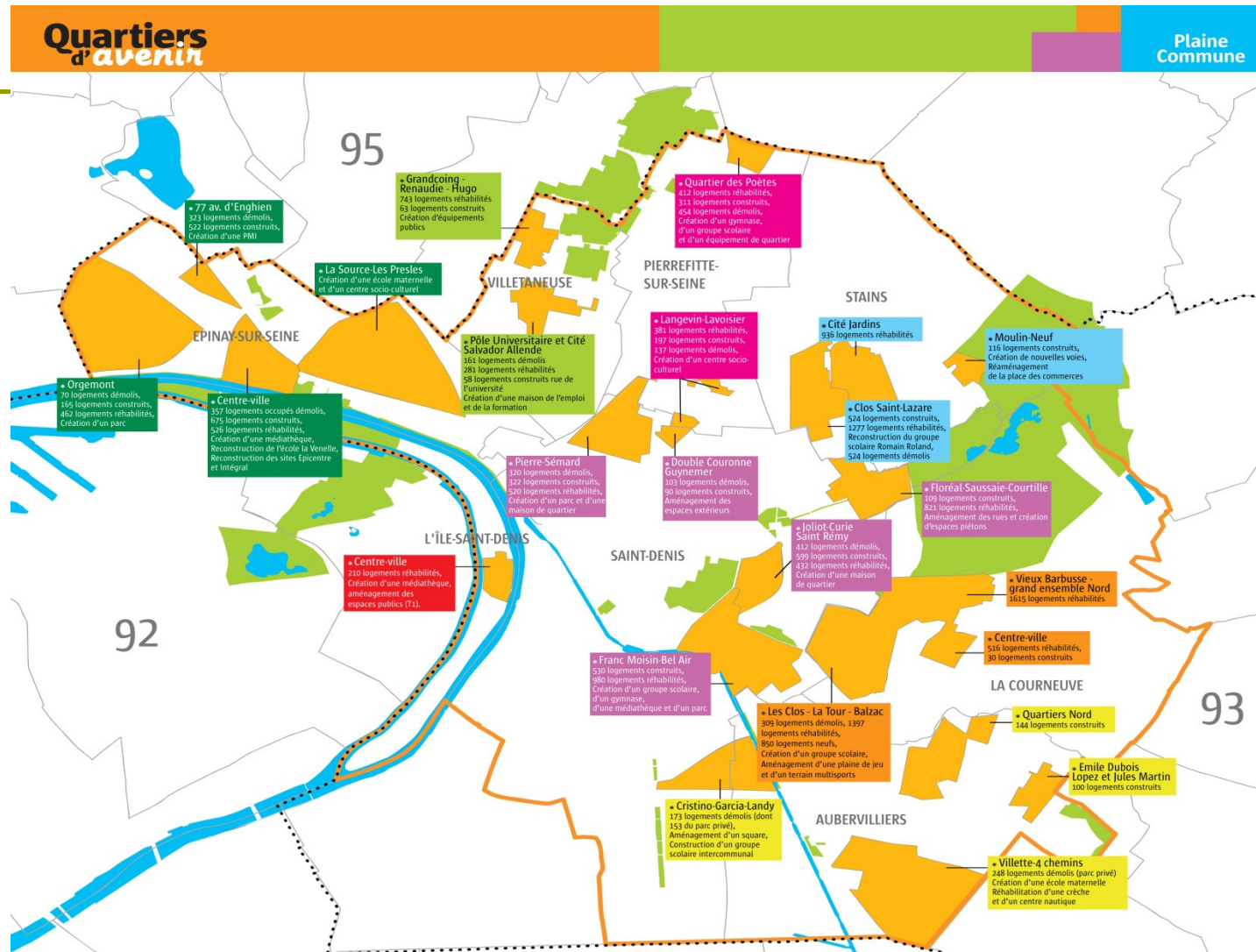
- ❑ Organize themselves into a "cooperative of Cities»
- ❑ Pooling resources
- ❑ Be stronger together
- ❑ Valuing the territory
- ❑ Develop supportive policy
- ❑ Promote citizen participation

# A Territorial Development Agreement based on the values of the project area

---

- ❑ **A supportive and inclusive development for the benefit of citizens, residents and local players, current and future**
- ❑ **A balanced and polycentric development: the right to centrality for all**
- ❑ **A framework for high quality life: pleasant, peaceful, sustainable and healthy**

# The urban renewal projects

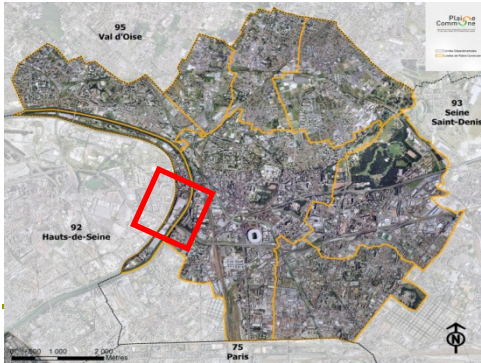


# The major projects

---

- ❑ The archives of the Ministry of Foreign Affairs of La Courneuve
- ❑ The Eco-river area of the Ile-Saint-Denis
- ❑ The Condorcet campus
- ❑ Epicentre
- ❑ Porte de Paris
- ❑ Gare de Saint-Denis / Confluence

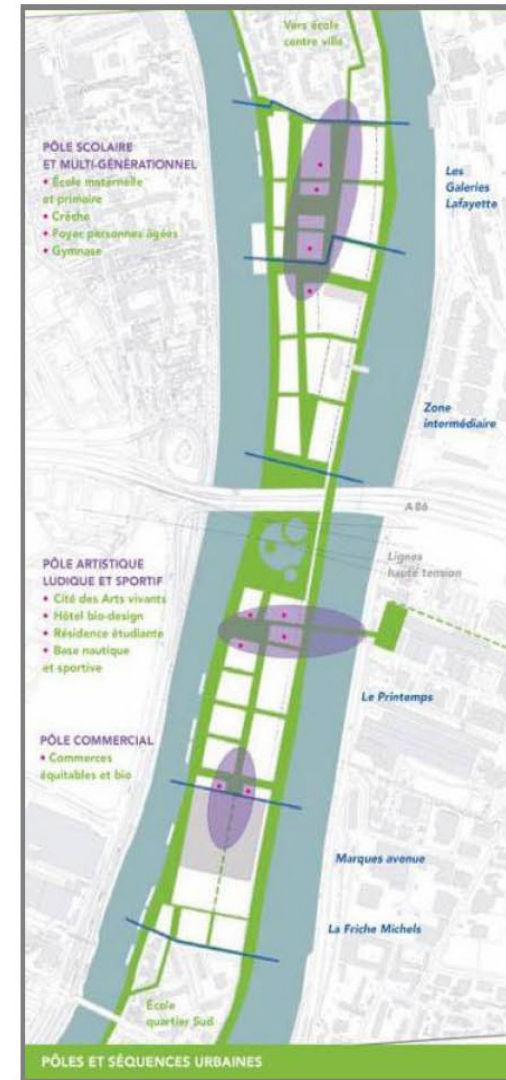
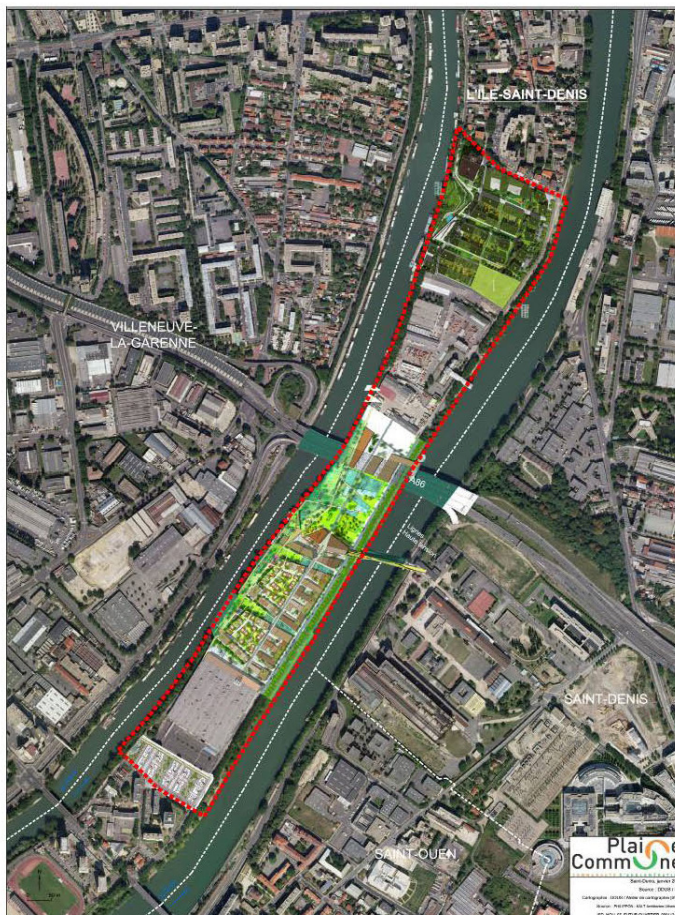




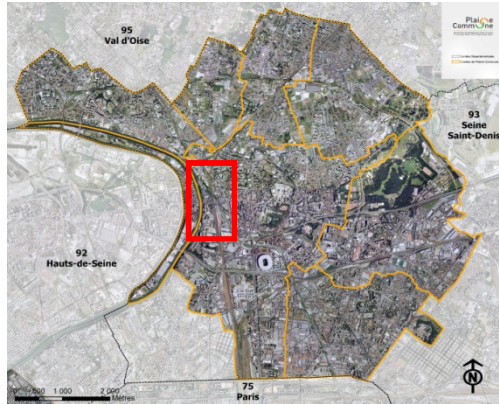
# L'Île Saint-Denis: Eco-quartier fluvial

Le schéma directeur d'aménagement de l'éco-quartier fluvial

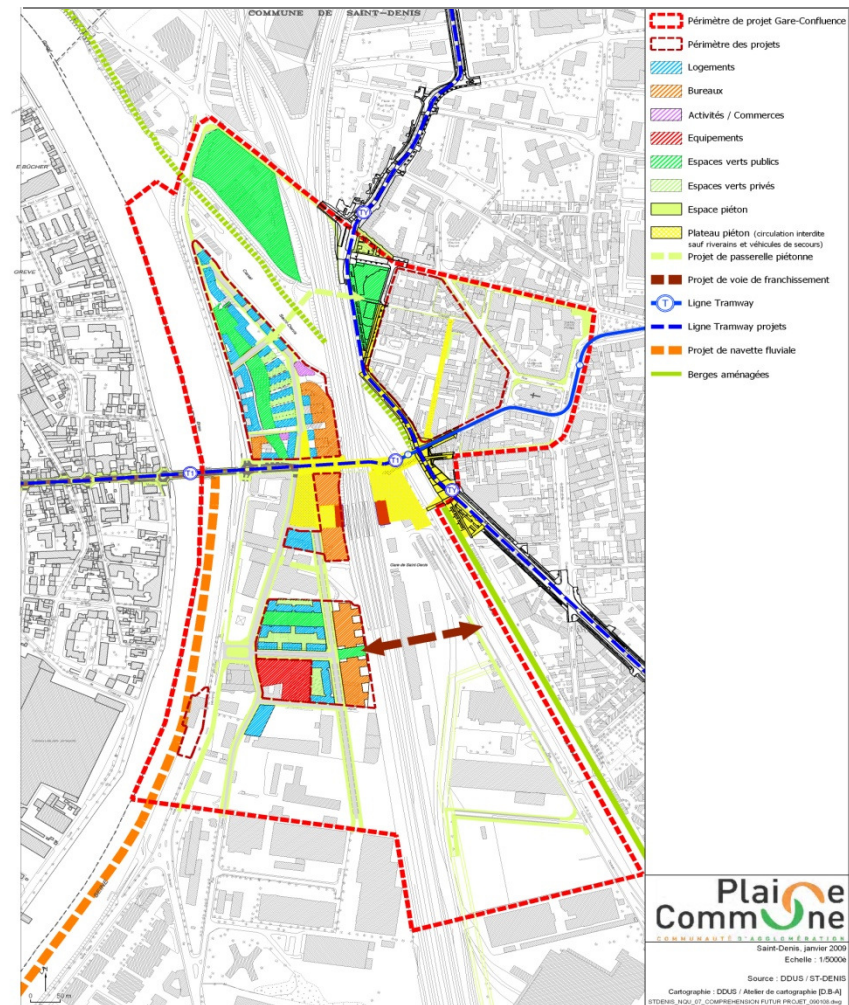
Site Galeries Lafayette : Architectes  
Brenac et Gonzales







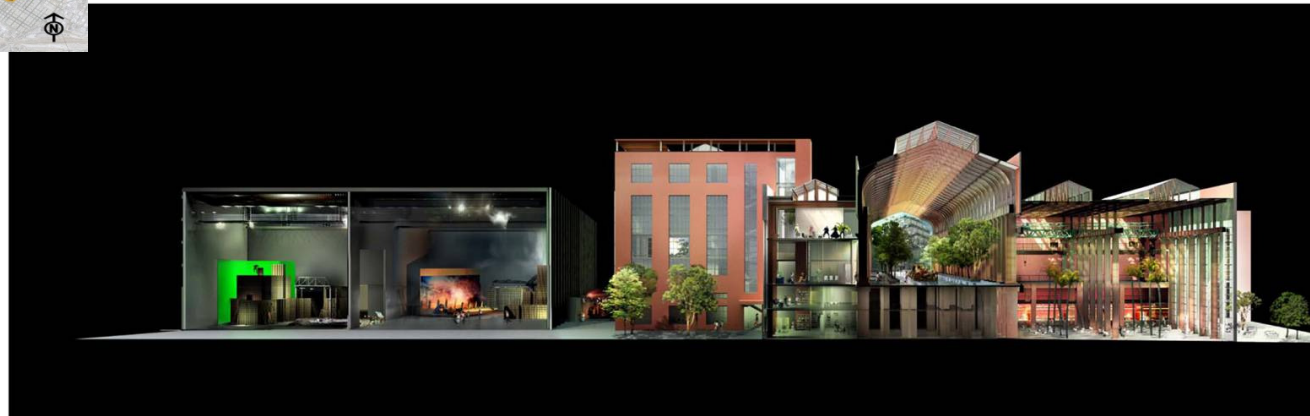
# Saint-Denis : Gare Confluence







# La Cité du Cinéma de Luc BESSON



REICHEN ET ROBERT - Architectes - urbanistes

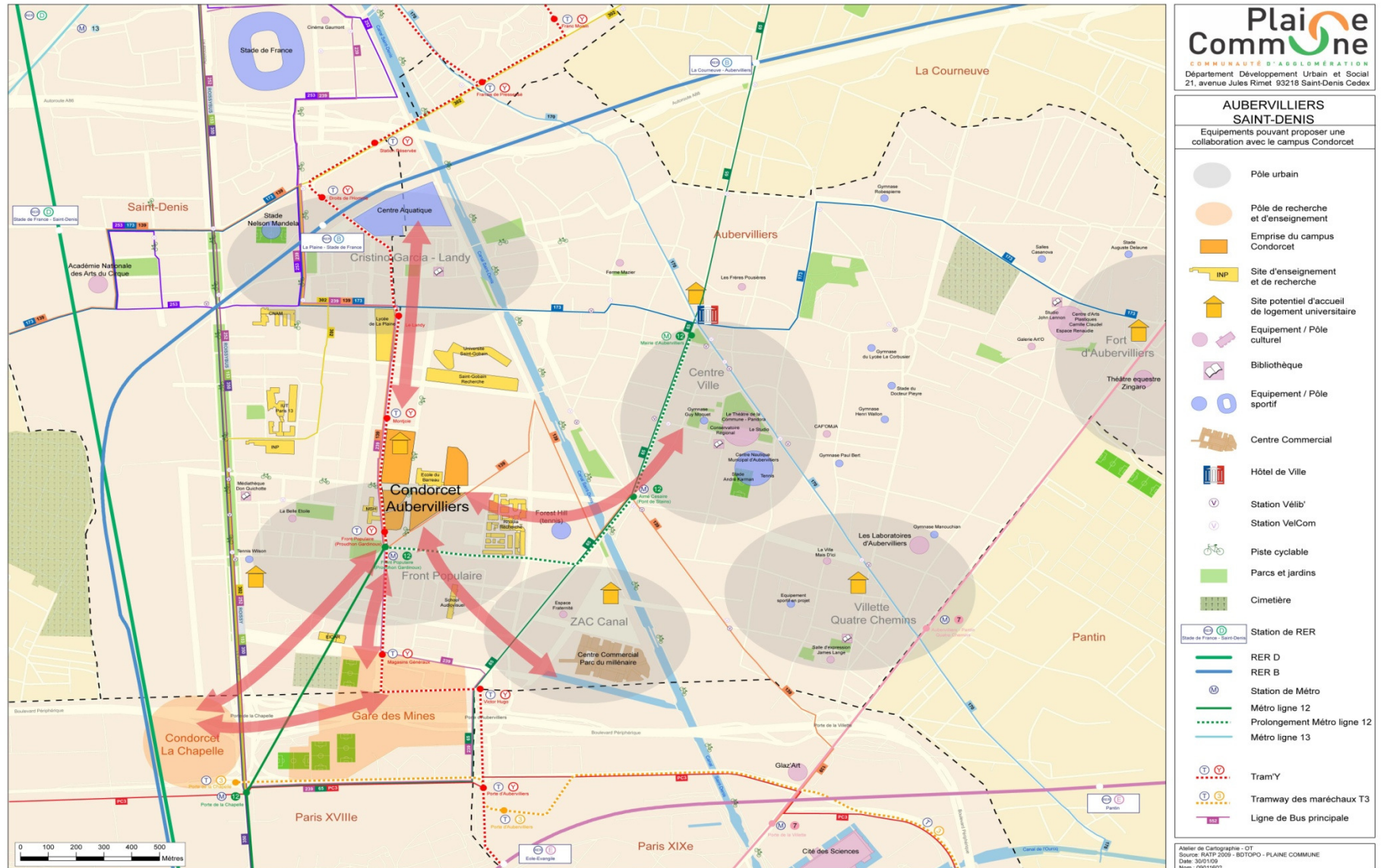


PLAINE COMMUNE - DDUS - Atelier de cartographie SVD - 2005



REICHEN ET ROBERT - Architectes - urbanistes

# Le campus Condorcet








# Pierrefitte-sur-Seine

## Le centre des Archives Nationales

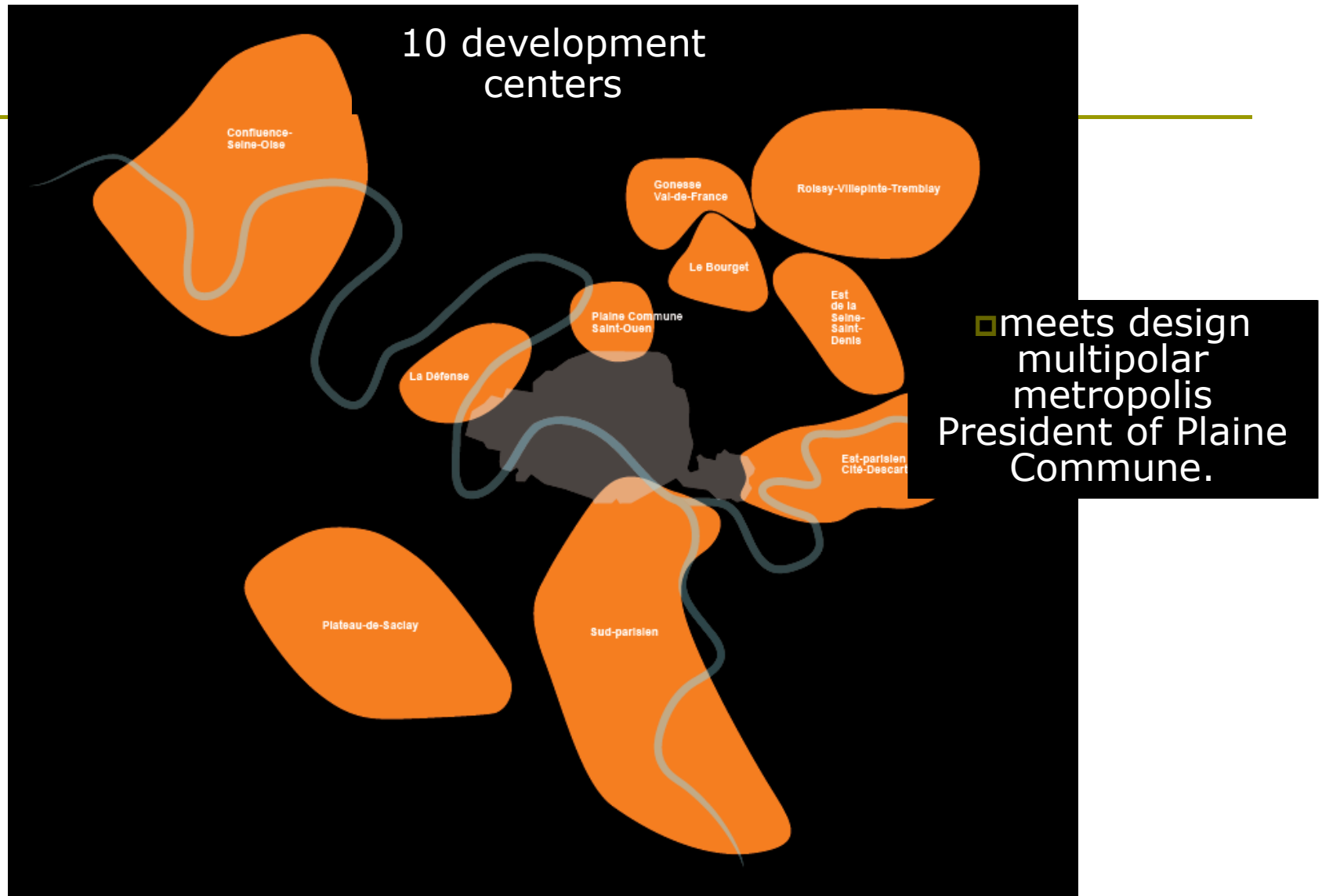




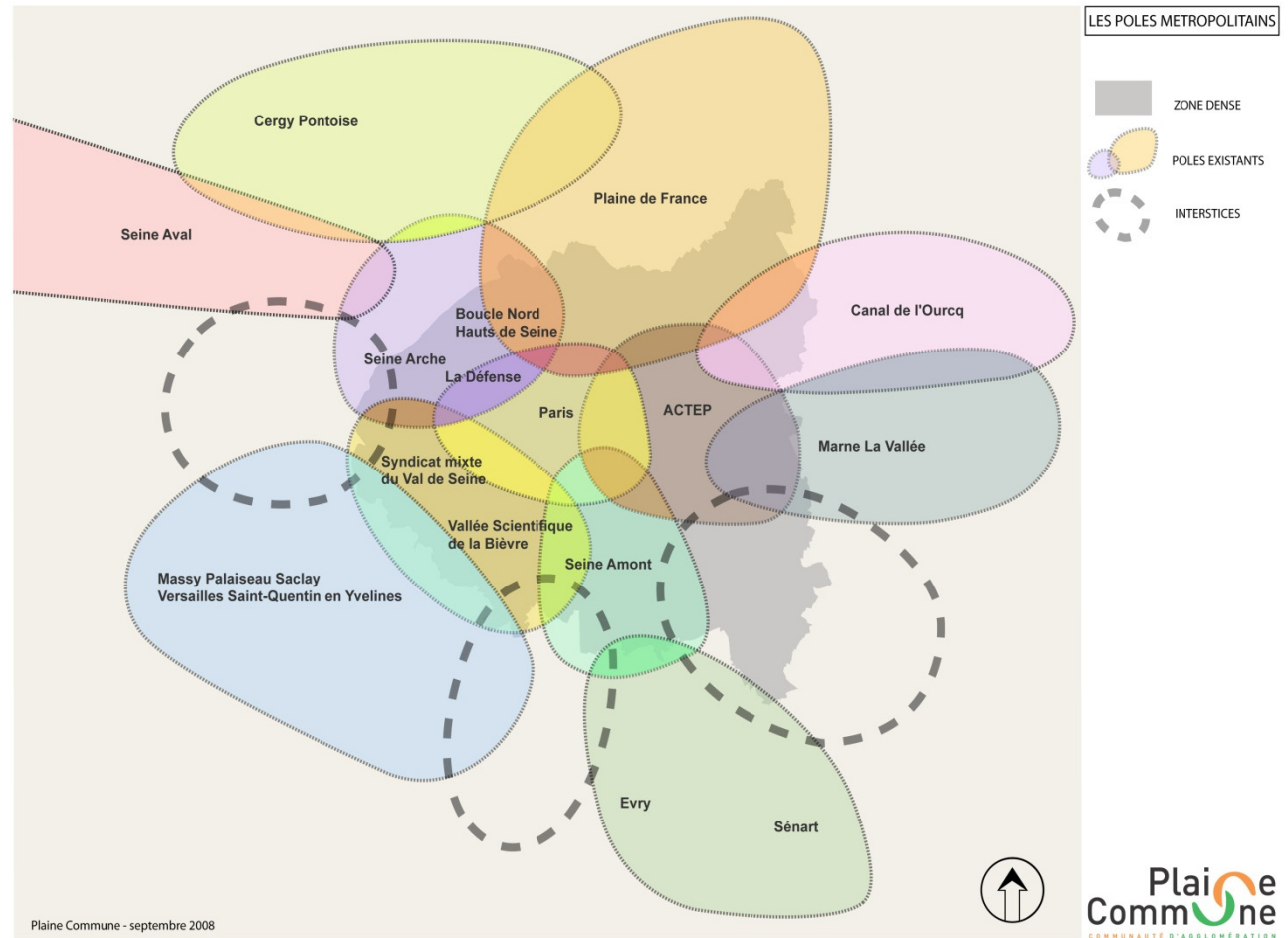
---

**Grand Paris: the "territory of culture and creation," recognition of a major hub of the city and new momentum.**

## → Le Grand Paris de Christian Blanc



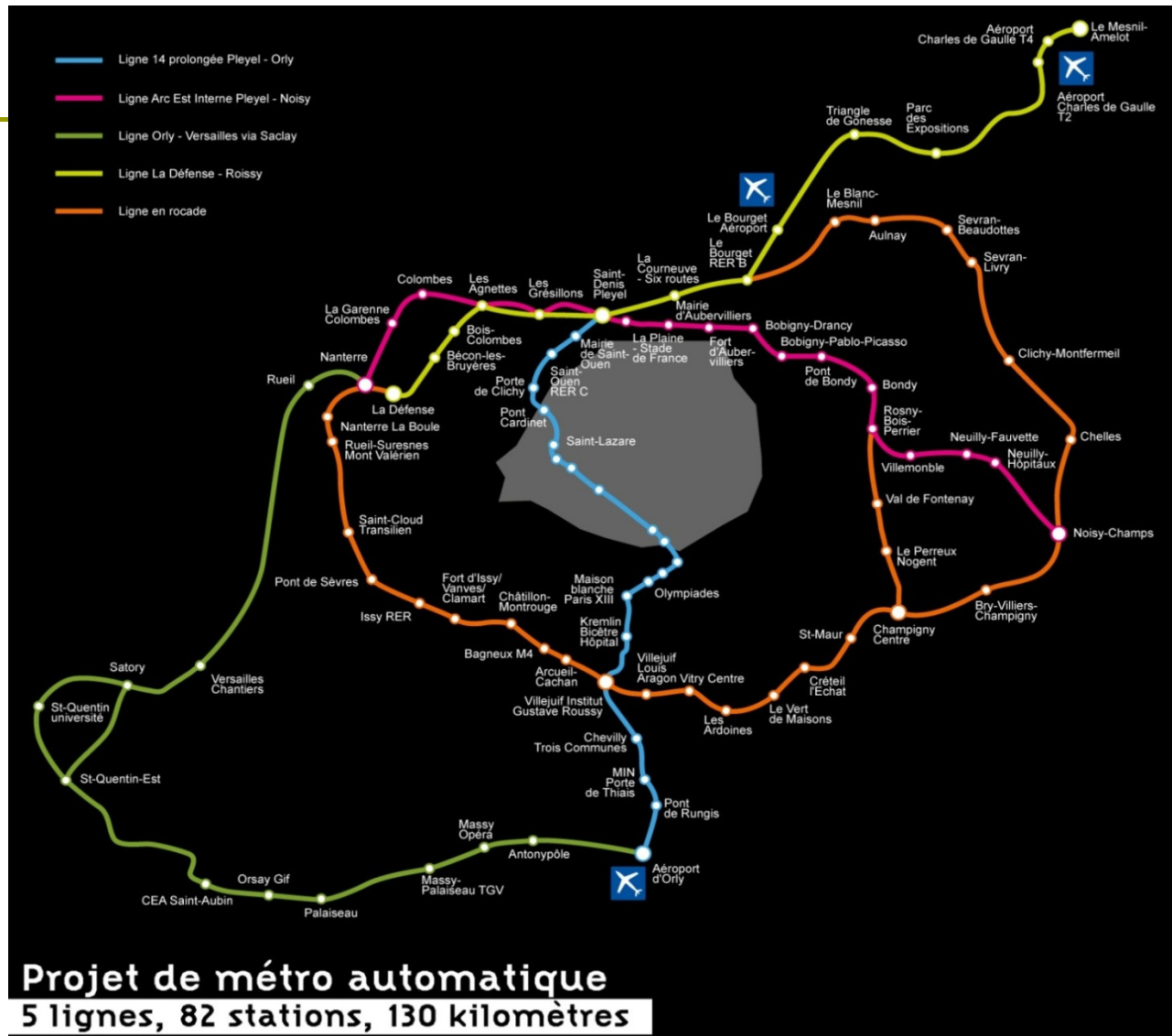
# Le Grand Paris by Plaine Commune



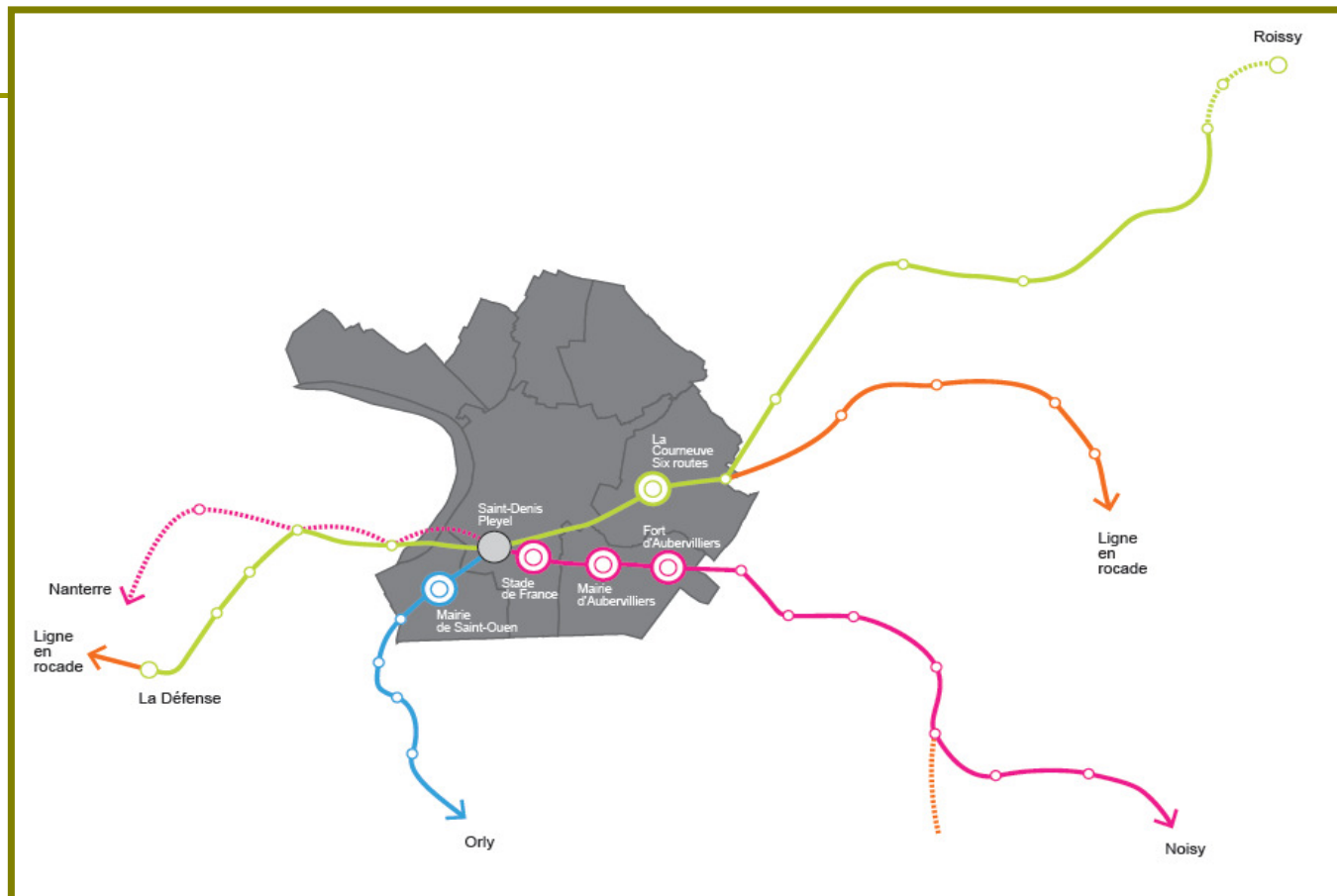
■ Plaine Commune au sein d'une métropole multipolaire, solidaire, inclusive, durable....



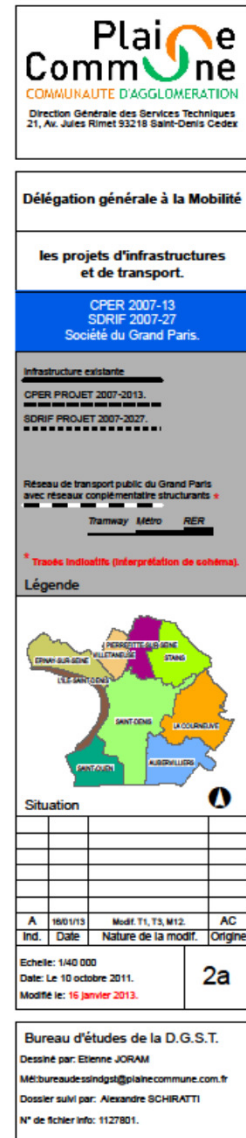
## → Le Projet de transport du Grand Paris



→ 6 new stations on our territory



Age Group	Percentage
18-24	15%
25-34	25%
35-44	30%
45-54	20%
55-64	10%
65-74	5%
75-84	2%
85+	1%





→ The "cluster" of creation around the City film, television studios,

---



La cité européenne du cinéma à Saint-Denis