



# **Mercato del Lavoro, Politica Sociale in EU**

**8 giugno 2018**

**Cinzia Masina**

***DG EMPL***

**cinzia.masina@ec.europa.eu**

**[www.ec.europa.eu/social](http://www.ec.europa.eu/social)    [www.ec.europa.eu/esf](http://www.ec.europa.eu/esf)**

# EMPLOYMENT, SOCIAL AFFAIRS AND INCLUSION DG





# Semestre europeo

Governance economica

Rapporto Paese

Raccomandazioni specifiche Paese

# CSR 2018

- *debito pubblico*
- *giustizia/corruzione/evasione*
- *finanziamento alle imprese*
- ***ALMP / donne / skills***

# Pilastro europeo dei diritti sociali

**20 principi**

**Bussola / ispirazione per convergenza verso l'alto**

## **Pari opportunità di accesso al mercato del lavoro**

1. Istruzione, formazione e apprendimento permanente
2. Parità di genere
3. Pari opportunità
4. Sostegno attivo all'occupazione

## **Eque condizioni di lavoro**

5. Occupazione flessibile e sicura
6. Retribuzioni
7. Informazioni sulle condizioni di lavoro e sulla protezione in caso di licenziamento
8. Dialogo sociale e coinvolgimento dei lavoratori
9. Equilibrio tra attività professionale e vita familiare
10. Ambiente di lavoro sano, sicuro e adeguato e protezione dei dati

## **Sicurezza sociale e inclusione**

11. Assistenza all'infanzia e sostegno ai minori
12. Protezione sociale
13. Prestazioni di disoccupazione
14. Reddito minimo
15. Reddito e pensioni di vecchiaia
16. Assistenza sanitaria
17. Inclusione delle persone con disabilità
18. Assistenza a lungo termine
19. Alloggi e assistenza per i senzatetto
20. Accesso ai servizi essenziali

## Processo e prossime tappe

- **Raccomandazione Commissione** il 26 Aprile 2017.
- *President Juncker e PM SE Löfven: 'Social Summit for Fair Jobs and Growth' il 27 November 2017 a Göteborg*
- proclamazione interistituzionale di Parlamento, Consiglio och Commissione
- *scoreboard usato nel processo del semestre*



## ***Social Fairness Package (14/3/18):***

- Labour Authority
- Access to Social Protection (atypical workers)
- Monitoring of the implementation of the Pillar:
  - Balans mellan arbete och privatliv Direktiv (bättre uppdelning av familjarbete mellan men och kvinnor): pappa- och föräldrarledighet, carers, flexiarbet...
  - Social Security Coordination Directive (revision)
  - Accessibility Act Proposal
  - Coordination of Social Security systems
  - Posting of Workers Directive (revision)
  - YG
  - Skills Agenda (**European Framework for Quality and Effective Apprenticeships** approved 15/3/18)
  - ...



# FSE / IOG / FEAD

# Quale bilancio?

*FSE:*            *~86bn 2014-20*

ITA 11bn

**SE 900ml**

*IOG:*            *~3.2bn 2014-2015 + ~2bn 2016-20 (?)*

ITA 530ml

**SE 40ml**

*FEAD:*          *~3.8bn 2014-20*

ITA 670 ml

**SE 8ml**

# FSE - Legal framework

- The ESF legal basis is dual:
  - **Article 162 TFEU** (dedicated title to the ESF)
  - **Article 174 and 175 TFEU** (under the title for economic, social and territorial cohesion)
- From 2014 ESIF operate under a **common framework** – the Common Provisions Regulation (CPR) and pursue **complementary policy objectives**.
- The **ESF Regulation** is the fund specific regulation



- Shared Management
  - **AdG: Regioni, Ministeri, ANPAL**
- Cofinanziamento (50%-85%)

# FSE Programmi Operativi (PO)

**187 FSE PO in EU**

**29 in ITA ☹️**

**2 FSE PO in SE**

**1 FSE PO in DK**

# Thematic objectives and investment priorities of ESF

- **T08 occupazione**
- **T09 inclusione sociale**
- **T010 istruzione**
- **T011 PA**



## Youth Employment Initiative

- Called for by the EU Council conclusions of February 2013
- YEI objective – to support MS in the fight against youth unemployment
- YEI only applies to EU regions experiencing youth unemployment rates above 25%
- YEI target group is young NEETs aged <25/<30yrs





- **General objective:** promoting social cohesion by contributing to achieving the EU2020 poverty reduction target
- **Specific objective:**
  - alleviating the worst forms of poverty by providing assistance to the most deprived persons
  - filling a gap within the Structural Funds.
- **Budget: 3.8 bn €**



# Scope

## 2 types of Operational Programmes:

- Food and Basic Material Assistance (typ I): 24 MS
- Social Inclusion of Most Deprived Persons (typ II)
  - **4 MS (DE, SE, NL, and DK)**

# Timeline

**2 May  
2018:**  
MFF  
proposal  
presented to  
EP

**29  
May  
2018:**  
CPR

**9 May  
2019:** EU  
leaders'  
summit,  
Sibiu,  
Romania

**14 May  
2018:**  
MFF proposal  
presented to  
the EU  
Council of  
Ministers

**30 May  
2018:**  
ESF+  
Regulation

**23-26 May  
2019:**  
European  
elections



# FAIR & BALANCED

## A new architecture for the future

In billion euro, current prices



### I. SINGLE MARKET, INNOVATION AND DIGITAL

- 1 Research and Innovation
- 2 European Strategic Investments
- 3 Single Market
- 4 Space



### II. COHESION AND VALUES

- 5 Regional Development and Cohesion
- 6 Economic and Monetary Union
- 7 Investing in People, Social Cohesion and Values



### III. NATURAL RESOURCES AND ENVIRONMENT

- 8 Agriculture and Maritime Policy
- 9 Environment and Climate Action



### IV. MIGRATION AND BORDER MANAGEMENT

- 10 Migration
- 11 Border Management



### V. SECURITY AND DEFENCE

- 12 Security
- 13 Defence
- 14 Crisis Response



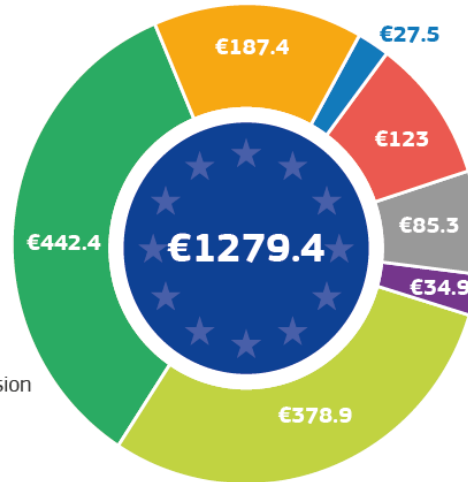
### VI. NEIGHBOURHOOD AND THE WORLD

- 15 External Action
- 16 Pre-Accession Assistance



### VII. EUROPEAN PUBLIC ADMINISTRATION

- 17 European Public Administration



Source: European Commission



# ALIGNED TO POLITICAL PRIORITIES

## POLICY CLUSTERS

1. Research & Innovation
2. European Strategic Investments
3. Single Market
4. Space
5. Regional Development & Cohesion
6. Economic & Monetary Union
7. Investing in People, Social Cohesion & Values
8. Agriculture & Maritime Policy
9. Environment & Climate Action
10. Migration
11. Border Management
12. Security
13. Defence
14. Crisis Response
15. External Action
16. Pre-accession Assistance
17. Administration

## NEW HEADINGS





# The ESF+ in the MFF 2021-2027



## II COHESION & VALUES

### 5 Regional Development & Cohesion

- European Regional Development Fund
- Cohesion Fund
- Support to the Turkish-Cypriot Community

### 6 Economic & Monetary Union

- Reform Support Programme including the Reform Delivery Tool and Convergence Facility
- Protection of the Euro Against Counterfeiting

### 7 Investing in People, Social Cohesion & Values

- European Social Fund + (incl. Integration of Migrants & Health)
- ERASMUS+
- European Solidarity Corps
- Justice, Rights & Values
- Creative Europe (incl. MEDIA)

European  
Solidarity  
Fund

European  
Investment  
Stabilization  
Function

Globalization  
Adjustment  
Fund

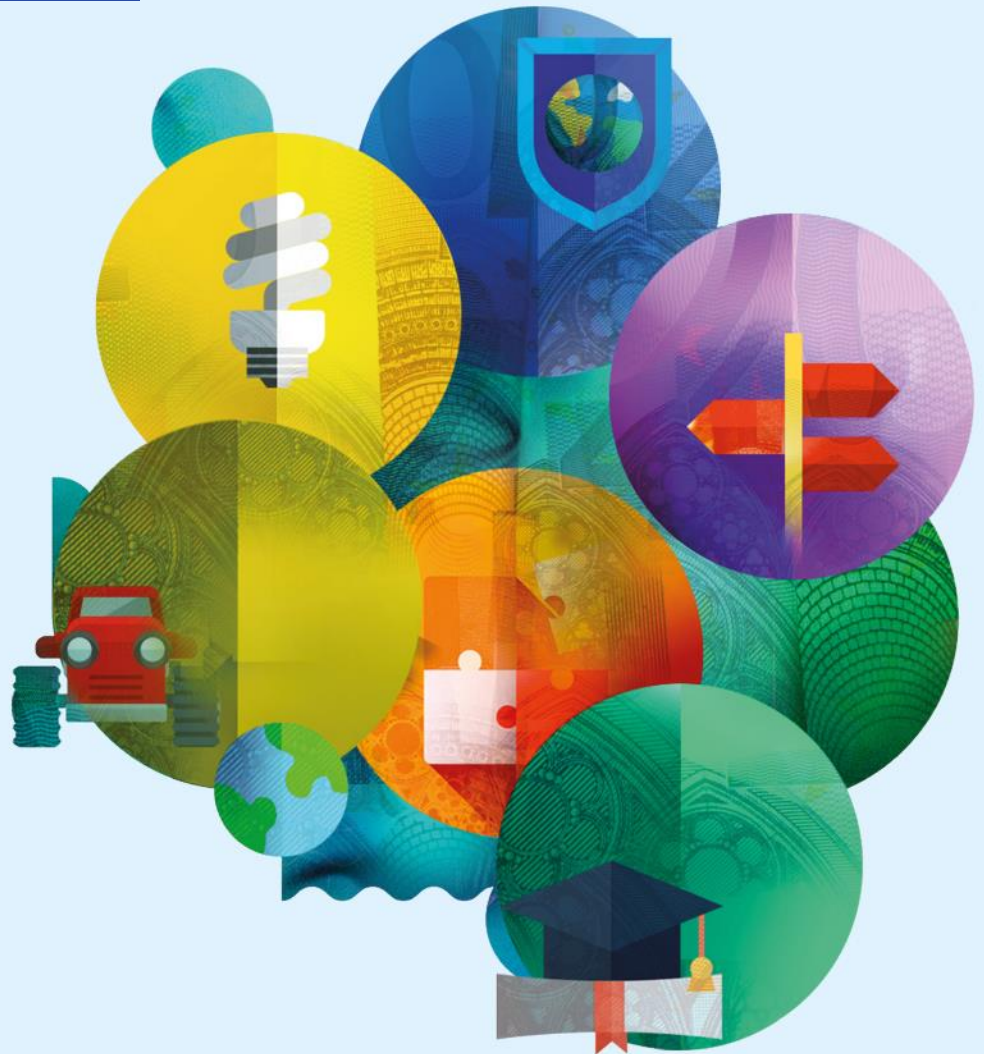


# ESF+ budget post-2020

- MFF proposal with an ambitious social dimension
- Positive signal compared to 2014-2020 period (post-2020 EU27)
- Around 27% of Cohesion policy budget
- Concrete amount of 101.2 billion (current prices)
- Commitment to investing in people & implementing the European Pillar of Social Rights

# The European Social Fund Plus (ESF+)

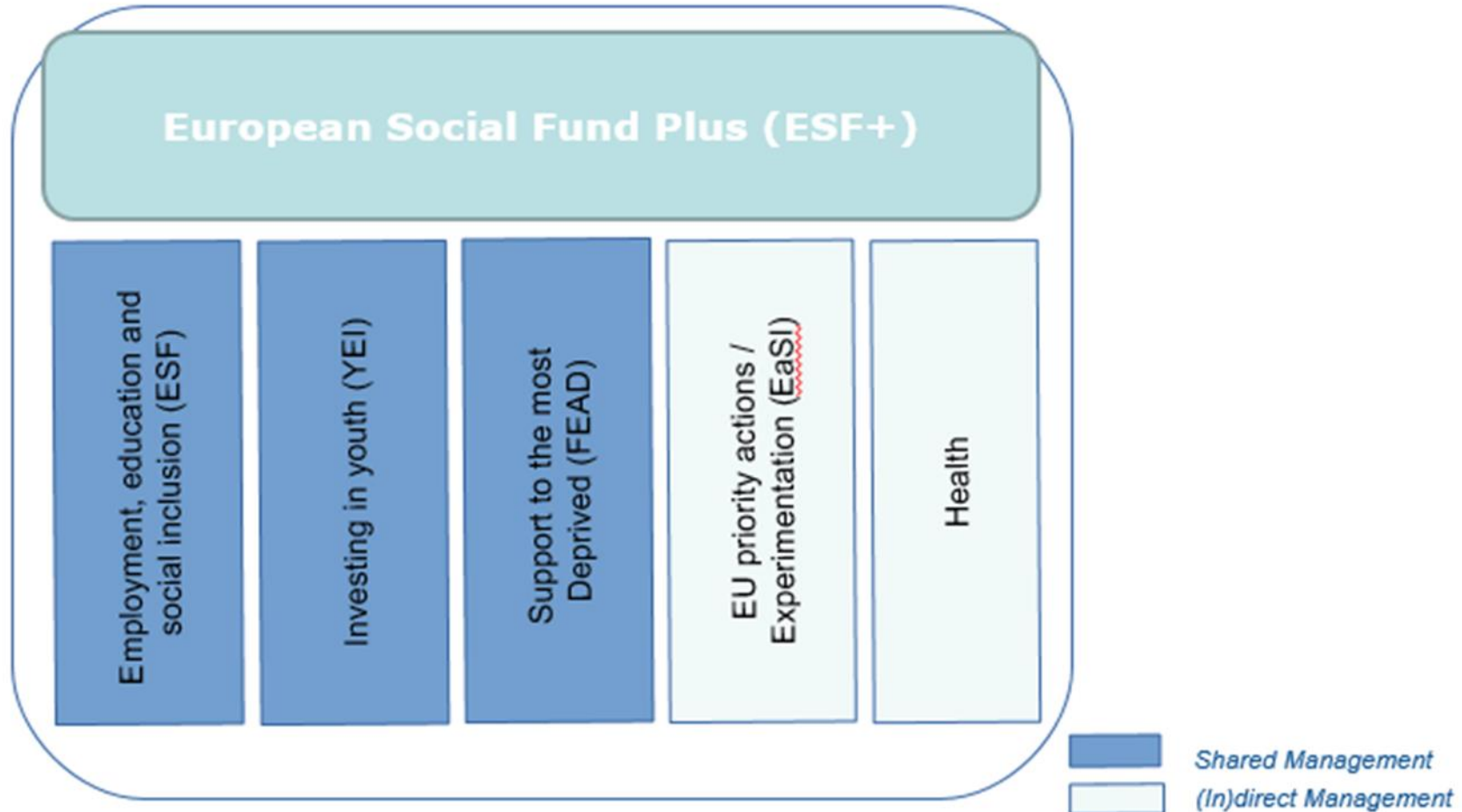
*#EUBudget*







# The ESF+ : 5 funds coming together





# Flexibility and policy alignment (1)

- Reinforced link with the **European Semester** and the **European pillar of social rights** in terms of setting policy priorities and mid-term review of programming
- Focus kept on support to **youth employment** and **social inclusion**, including the integration of **migrants**
- More flexible application of **territorial rules**



## Flexibility and policy alignment (2)

- Rules on link to Semester and Pillar set out in Common Provisions Regulation (COM(2018)375)
- Conditionality linked to Semester maintained, but simpler
- CSR reflected in programmes twice during the programming period (mid-term review in 2025)  
⇒ Allocations for 5+2 years
- Performance reserve is discontinued
- Measures to promote sound economic governance: suspensions on commitments and payments



# The ESF+: simplification and continuity

- General provisions applicable to all
- Different management modes kept depending of the activities supported
- Simplification elements kept (FEAD) and additional simplification efforts proposed, e.g.:
  - Simplified programming documents
  - More simplified cost options and payments based on conditions
  - Continuity of existing elements (e.g. designation of authorities)
  - Reporting and monitoring



# Specific objectives of ESF+



- (i) improving access to employment
- (ii) modernising labour market
- (iii) women's labour market participation, work/life balance, childcare, working environment, adaptation to change, active and healthy ageing
- (iv) Quality education and training
- (v) Education and training systems
- (vi) lifelong learning,
- (vii) active inclusion
- (viii) integration of migrants and marginalised communities e.g. Roma;
- (ix) access to services; social protection healthcare systems and long term care
- (x) people at risk of poverty including / most deprived and children;
- (xi) addressing material deprivation

EU Pillar of Social Rights

Horizontal principles

Gender

Equal opp.s

Non discrimination

(xv) Health promotion

Contribution to "Smarter Europe" "Greener Europe"

Social Europe



European Commission

**ESF +**

**€101,2 Billion**

**ESF+ Shared management**

**€100 billion**

Concentration requirements

- CSR implementation
- 25% Social inclusion , of which  
2% material deprivation (target: 4% at EU level)
- 10% in Member States with high NEET rate

Outermost Regions/NSRF €400 million

Transnationality €200 million

**ESF+**

**(in)direct management**

**€1,2 billion**

- Employment and Social Innovation strand
- Health strand

€761 million

€413 million



# Consistency and thematic concentration

- Synergies and coherence with other funds
- Appropriate amount of ESF+ resources under shared management to support CSR and challenges under the EU Semester
- at least 25% dedicated to social inclusion, of which

at least 2% to address material deprivation



- MS with high NEET rates, at least 10% to youth employment (outermost regions: 15%)



# ESF+ support for addressing material deprivation

- direct or indirect provision of food and material assistance (respecting safety standards) to the most deprived people, which can be accompanied by social integration measures
- other relevant provisions: content of programming, eligibility of operations and expenditure, indicators and reporting (Annex II); audit