



Città migliori per una vita migliore

Fabio Monforti-Ferrario – Joint Research Centre – Clean Air and Climate Unit - European Commission

Formez - Lezioni di Europa 2024

Lezione 7 - Rendere vivibili le città: il New European Bauhaus

4 Aprile 2024

II JRC – Scienza a supporto delle politiche UE

Science for policy



ANTICIPATE



INTEGRATE



IMPACT

Our purpose

The Joint Research Centre provides independent, evidence-based knowledge and science, supporting EU policies to positively impact society.

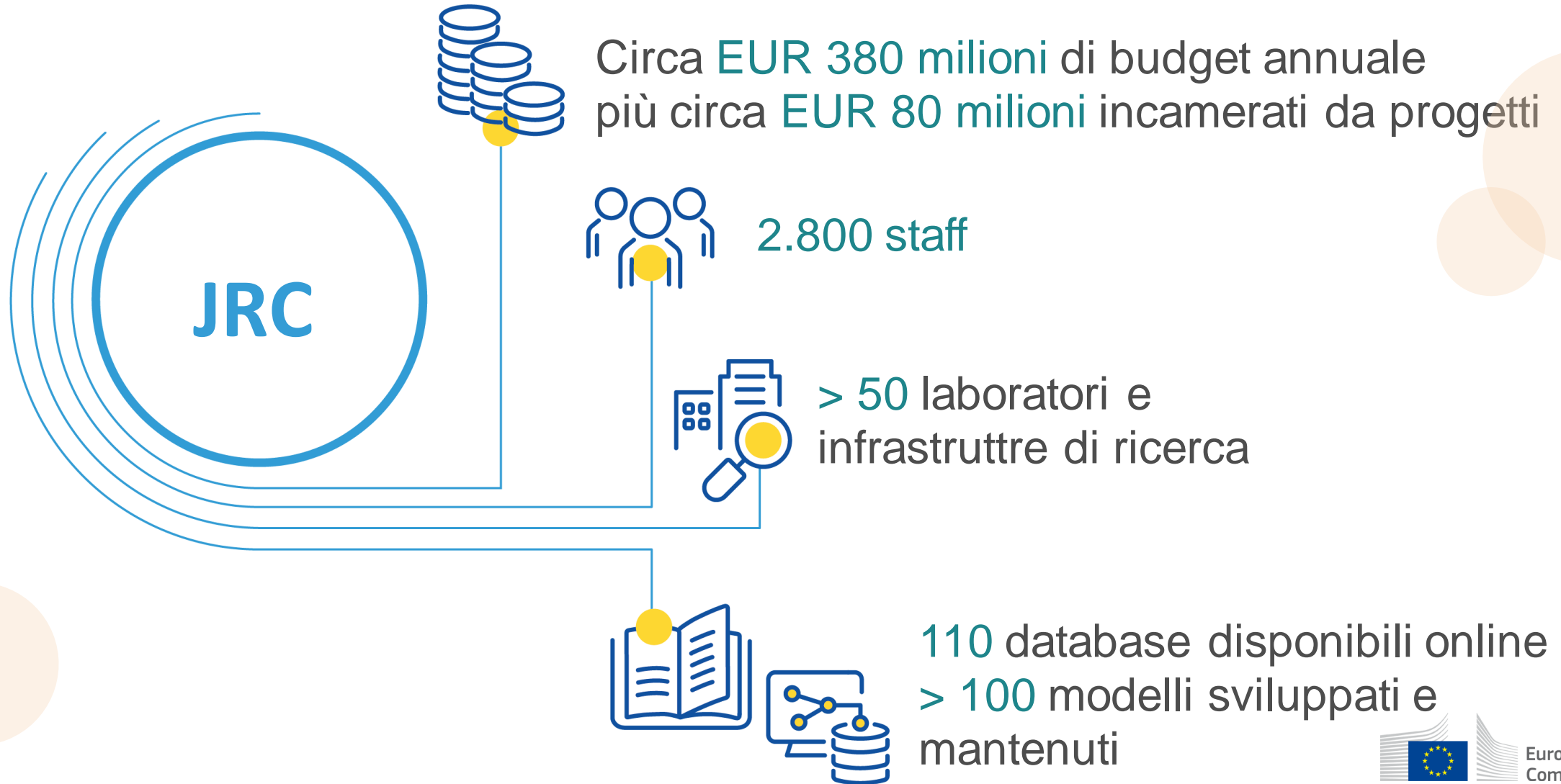
JRC - siti

Quartier generale a **Bruxelles**
e centri di ricerca situati
in **5 Nazioni UE**:

- Belgio (Geel)
- Germania (Karlsruhe)
- Italia (Ispra)
- Paesi Bassi (Petten)
- Spagna (Seville)



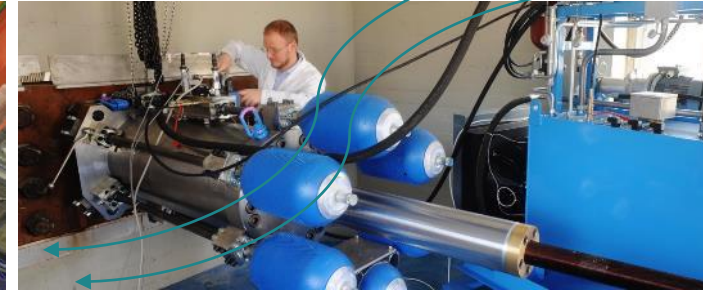
JRC – Fatti e cifre



Laboratori JRC – Alcuni esempi

Visita virtuale: <https://visitors-centre.jrc.ec.europa.eu/en/media?type=8>

European
Laboratory for
Structural
Assessment (ELSA)



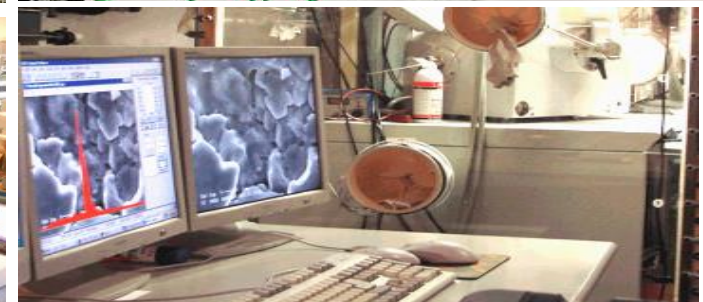
Hopkinson
Bar facility
(HOPLAB)

Vehicle Emission
Laboratory (VELA)+
vehicle Market
Surveillance
Laboratory



European
Interoperability
Centre for Electric
Vehicles and
Smart Grids

Battery Testing
Facility Laboratory



Nuclear Forensic
Laboratory

Laboratori JRC – Alcuni esempi

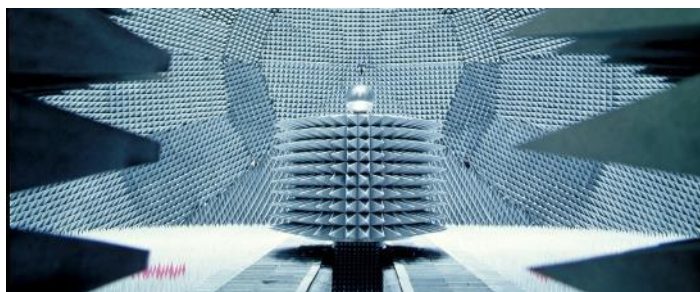
Visita virtuale: <https://visitors-centre.jrc.ec.europa.eu/en/media?type=8>

JRC ultra low-background gamma-ray spectrometry facility (HADES)



European Solar Test Installation (ESTI)

European Microwave Signature Laboratory (EMSL)



Gas Testing Laboratory

JRC radionuclide metrology laboratory (RADMET)



European Crisis Management Laboratory (ECML)

Città, clima e ambiente

La sostenibilità è al centro della New European Bauhaus

Il 75% dei cittadini della EU vivono in città, una percentuale che aumenterà fino all'85% nel 2050.

Nelle città si consumano i due terzi dell'energia e si emette il 70% della CO₂ mondiale.

"The battle for the Green Deal will be won or lost in cities"

Agire a livello locale – Patto dei Sindaci

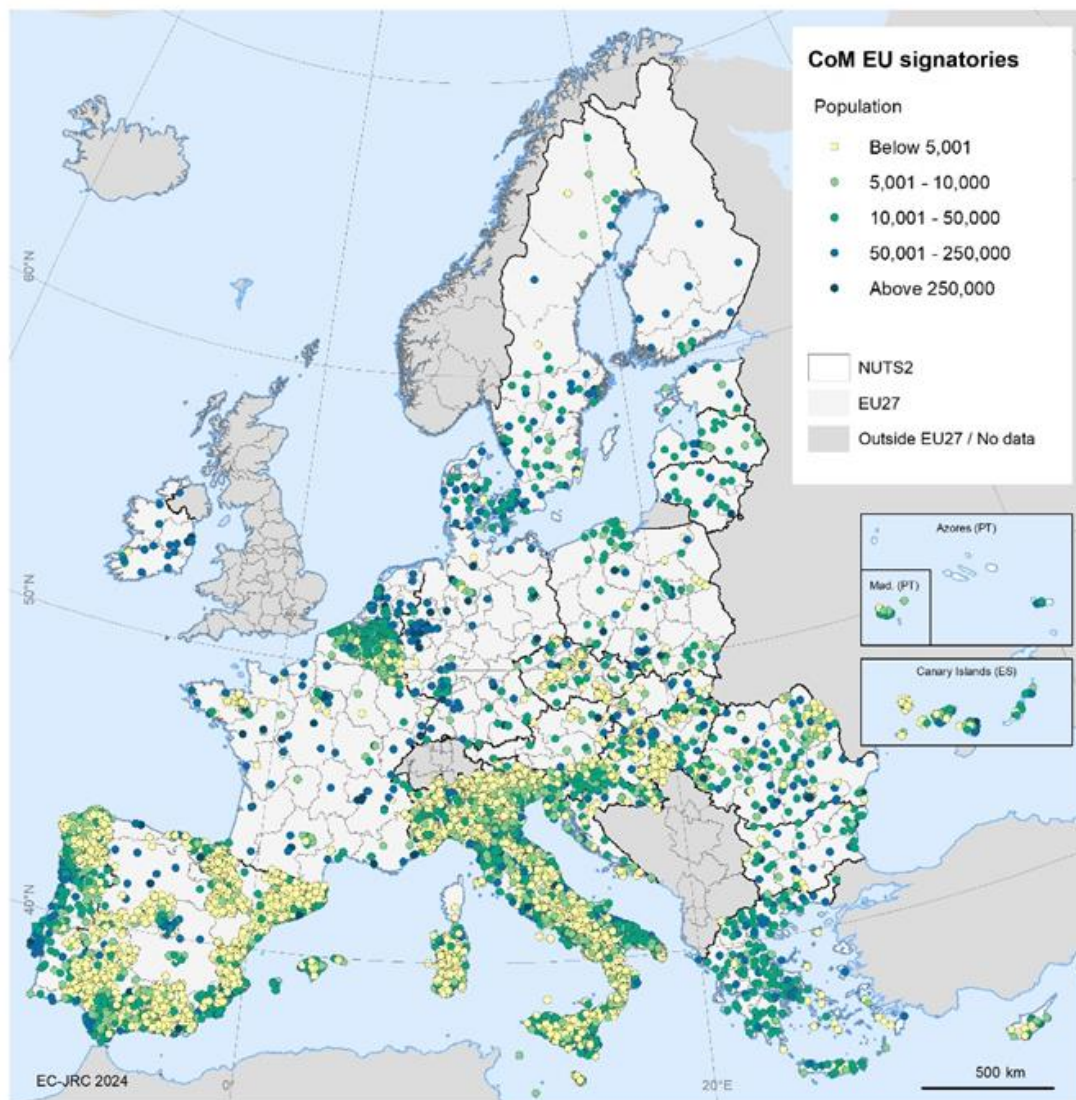
Il Patto dei Sindaci è il più grande movimento, su scala mondiale, delle città per le azioni a favore del clima e l'energia.



Il Patto mette in contatto e coordina migliaia di amministrazioni locali che si impegnano su base volontaria a perseguire obiettivi ambiziosi sulla mitigazione climatica.

Lanciato nel 2008 con un obiettivo iniziale del 20% di riduzione di CO₂, il Patto ha innalzato le sue ambizioni e ora molti firmatari puntano a raggiungere la piena neutralità climatica entro il 2050

Una iniziativa prima Europea, ora mondiale



Regione	Firmatari	Popolazione
EU-27	10 414	240 371 464
CoM-East	545	33 773 690
Europa – EFTA	31	3 044 113
CoM-Sud	147	15 235 593
Resto del mondo	230	78 414 038
TOTALE	11 367	370 838 898

Il “viaggio” dei firmatari

THE CITY JOURNEY

is different for every city.
This path of reference can be adapted as needed.



Il PdS si è rivelato una ottima palestra per coinvolgere i cittadini nella “traduzione” delle politiche per il clima e l’energia a livello locale.

Per questo rimane fondamentale il supporto dei cittadini in ogni fase dell’iniziativa.



EUROPEAN UNION



© European Union, 2022

OBJECTIVES

- Deliver at least **100 climate-neutral and smart cities by 2030.**
- Ensure that these cities act as **experimentation and innovation hubs** to enable **all European cities** to follow suit by 2050.

CLIMATE-NEUTRAL & SMART CITIES

Concrete solutions for our greatest challenges

#EUmissions #HorizonEU #MissionCities





EU27

CITTÀ SELEZIONATE

- 100 città nella UE da tutti gli Stati Membri di con diverse dimensioni e livelli emissivi a rappresentare il 12% della popolazione della UE.
- +12 città in nazioni associate.



Per l'Italia:

- Bergamo,
- Bologna,
- Firenze,
- Milano,
- Padova,
- Parma,
- Prato,
- Roma
- Torino

Sostenibilità – non solo gas serra

WHAT ARE THE SOURCES OF AIR POLLUTION?

Outdoor air pollution affects urban and rural areas and is caused by multiple factors:

The infographic illustrates six sources of air pollution: Industry & Energy Supply (factories), Transport (cars and trucks), Waste Management (incineration), Dust (wind-blown particles), Agricultural Practices (tractors), and Household Energy (homes). A central cloud labeled 'DUST' is shown being carried by wind from the agricultural area towards the urban area.

Countries cannot tackle air pollution alone.
It is a global challenge we must all combat together.

CLEAN AIR FOR HEALTH #AirPollution World Health Organization

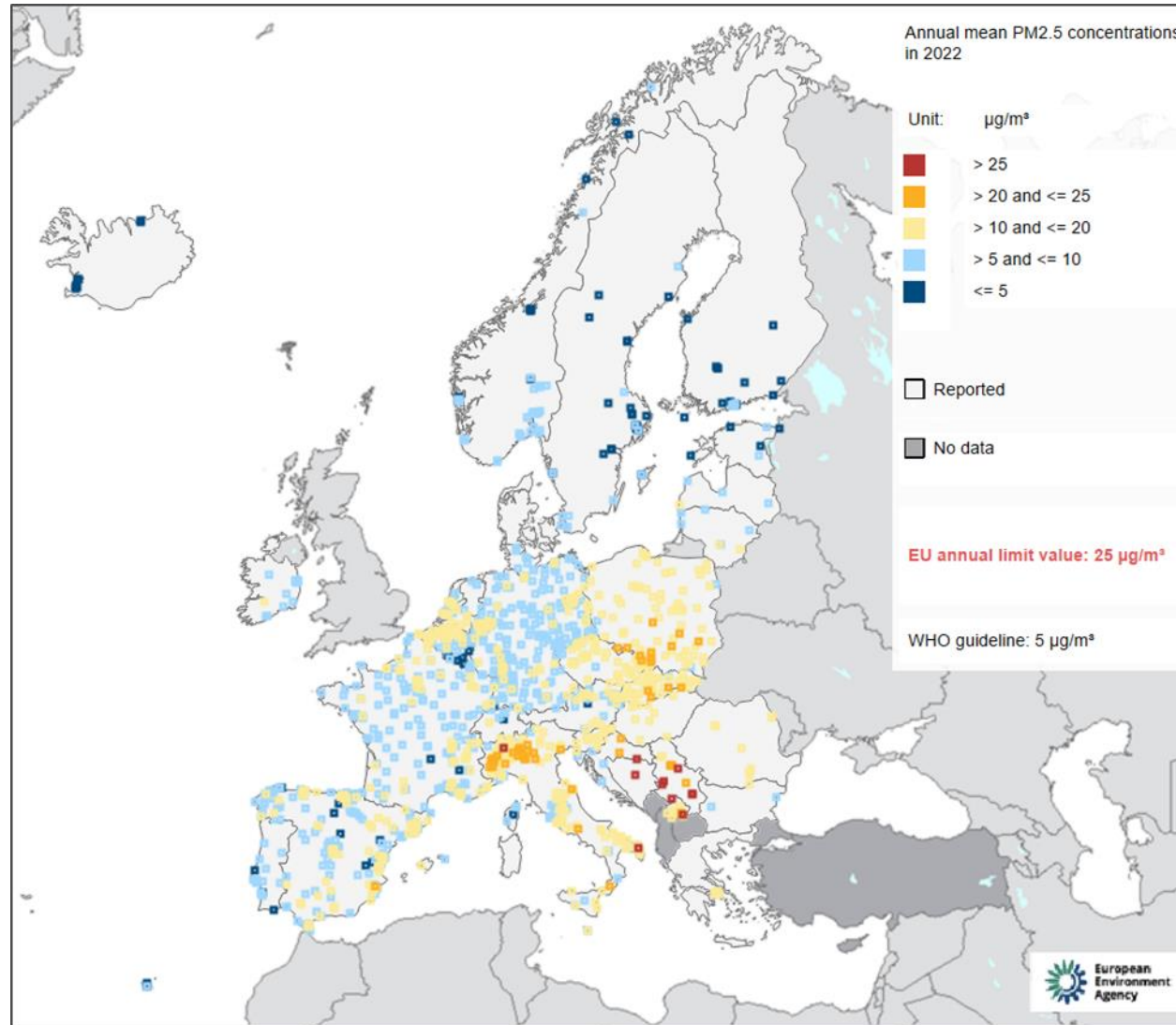
Zero Pollution Action Plan-Marzo 2021

Migliorare la qualità dell'aria per ridurre il numero di morti premature causate dall'inquinamento atmosferico di almeno il 55%.

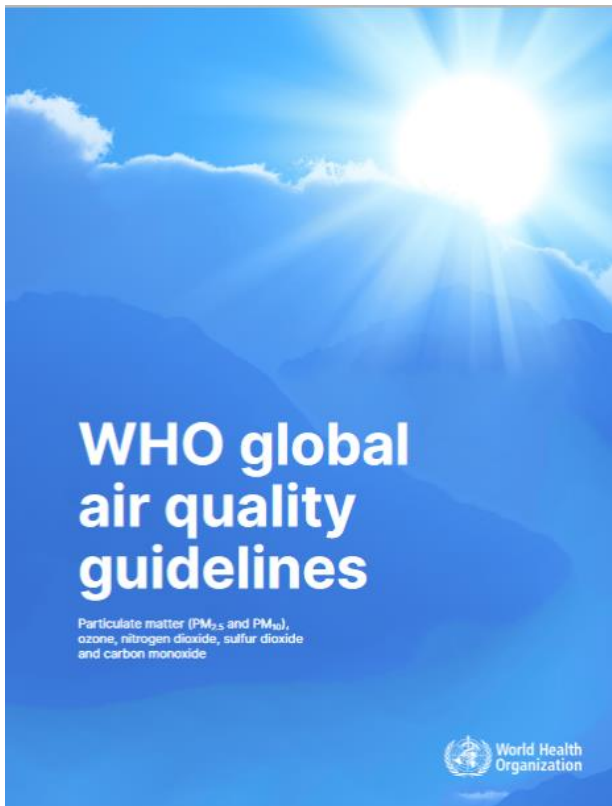
Nuova direttiva quadro sulla qualità dell'aria - proposta Ottobre 2022

Limiti di inquinamento più stringenti, in accordo con i nuovi valori soglia proposti dalla OMS.

Aria pulita e dove trovarla in Europa



Cosa fa la UE? nuovi obiettivi di qualità dell'aria



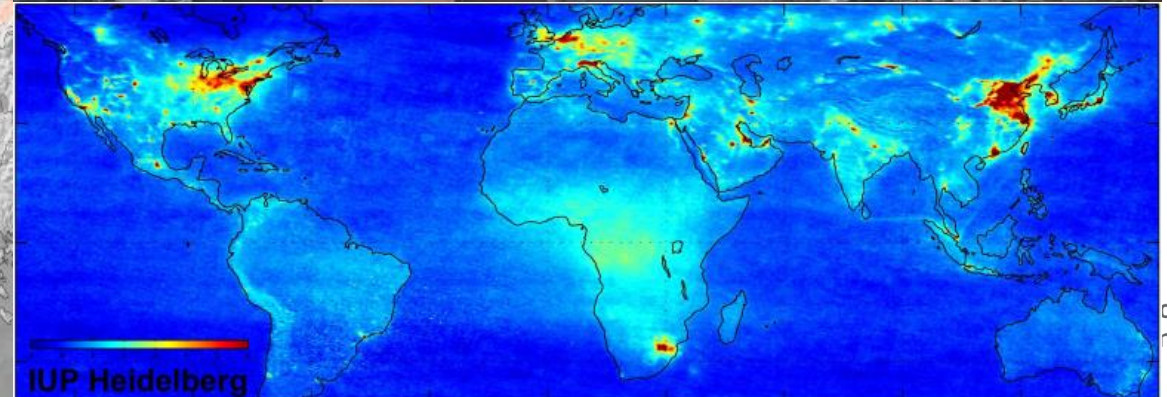
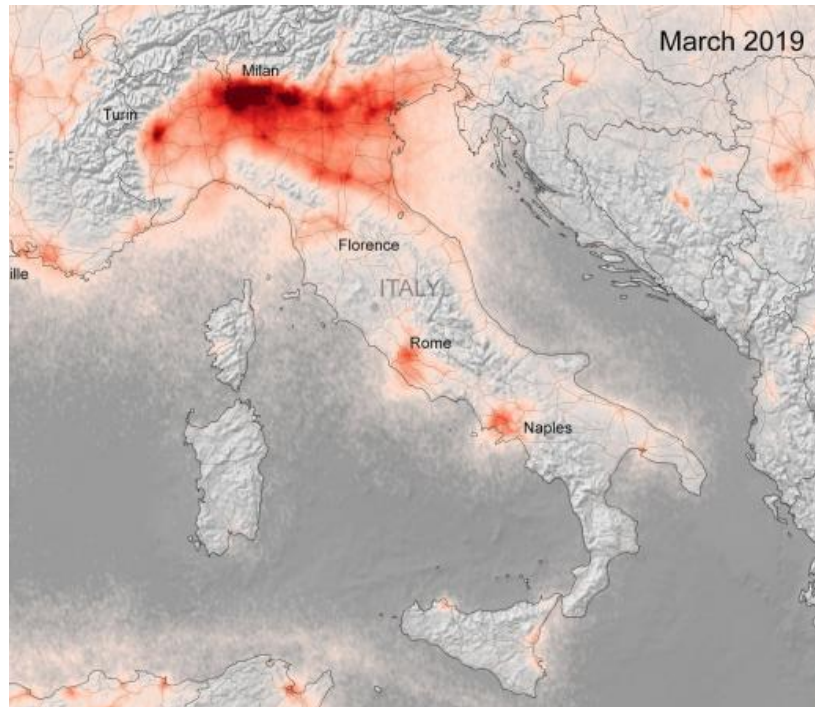
2021

Parameter	Time Interval	Directive 2008/50/EC	2022 Proposal
PM _{2.5}	Annual mean	25 µg/m ³	10 µg/m ³
	24-hour mean	NA	25 µg/m ³ not to be exceeded on more than 18 days/year
PM ₁₀	Annual mean	40 µg/m ³	20 µg/m ³
	24-hour mean	50 µg/m ³ not to be exceeded on more than 35 days/year	45 µg/m ³ not to be exceeded on more than 18 days/year
NO ₂	Annual mean	40 µg/m ³	20 µg/m ³
	1-hour mean	200 µg/m ³ not to be exceeded on more than 18 hours/year	200 µg/m ³ not to be exceeded on more than 18 hours/year
	24-hour mean	NA	50 µg/m ³ not to be exceeded on more than 18 days/year
O ₃	8-hour mean	120 µg/m ³ not to be exceeded on more than 25 days/year	120 µg/m ³ not to be exceeded on more than 18 days/year

2022 – in discussione

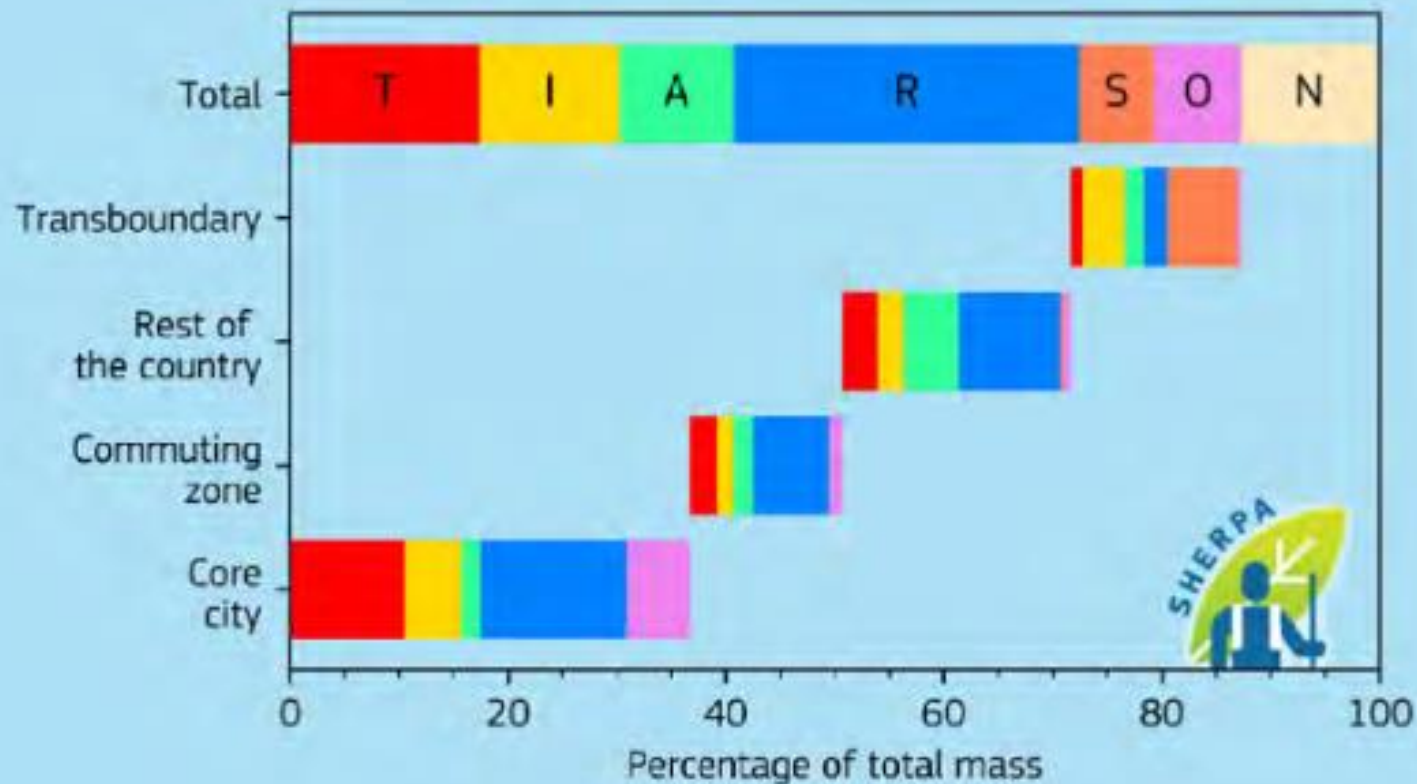
Da dove viene l'inquinamento?

- Città/comune
- Regione/bacino
- Nazione/continente/mondo

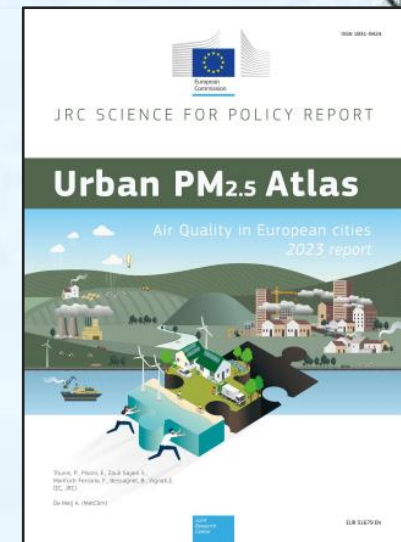


E nella mia città?

PM_{2.5} Spatial and sectoral allocation (SHERPA v.2.2.0)



- T - Transport
- I - Industry
- A - Agriculture
- R - Residential
- S - Shipping
- O - Other
- N - Natural
- E - External



Grazie per l'attenzione

Fabio.monforti-ferrario@ec.europa.eu



© European Union 2023

Unless otherwise noted the reuse of this presentation is authorised under the [CC BY 4.0](https://creativecommons.org/licenses/by/4.0/) license. For any use or reproduction of elements that are not owned by the EU, permission may need to be sought directly from the respective right holders.



Keep in touch



ec.europa.eu/



europa.eu/



[@EU Commission](https://twitter.com/EU_Commission)



[@EuropeanCommission](https://www.facebook.com/EuropeanCommission)



[European Commission](https://www.linkedin.com/company/european-commission/)



[europeancommission](https://www.instagram.com/europeancommission)



[@EuropeanCommission](https://medium.com/@EuropeanCommission)



[EUTube](https://www.youtube.com/EUTube)



[EU Spotify](https://open.spotify.com/playlist/37i9ZQZEVXndM4ZwE4YHzP)

New European Bauhaus

The New European Bauhaus initiative calls on all of us to imagine and build together a sustainable and inclusive future that is beautiful for our eyes, minds, and souls.

Beautiful are the places, practices, and experiences that are:

Enriching, inspired by art and culture, responding to needs beyond functionality.

Sustainable, in harmony with nature, the environment, and our planet.

Inclusive, encouraging a dialogue across cultures, disciplines, genders and ages.